

SECTION 13, T.6N., R.1E., S.L.B. & M.

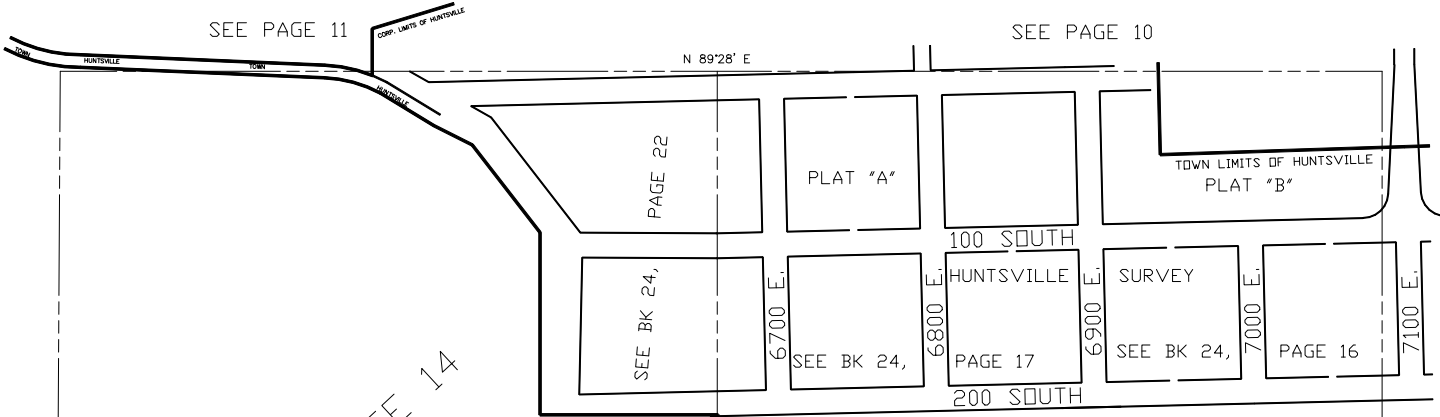
IN WEBER COUNTY
SCALE 1" = 400'

TAXING UNIT: 318

SEE PAGE 11

SEE PAGE 10

N 89°28' E



SEE PAGE 14

SEE BOOK 24, PAGE 21

SEE BOOK 24, PAGE 8

SEE PAGE 15

PINEVIEW

RESERVOIR

U.S.A.
SEE 200140001

U.S.A.
200130005

U.S.A.
200130003

U.S.A.
200130002

U.S.A.
(200130004)

U.S.A.
200130001

U.S.A.
(200130009)

STATE HIGHWAY U-39
SEE PAGE 36

CELTIC BANK CORP
200130020
1150 AC±

UNITED STATES OF AMERICA
(200130007)
84 AC±

UNITED STATES OF AMERICA
(200130016)
4188 AC±